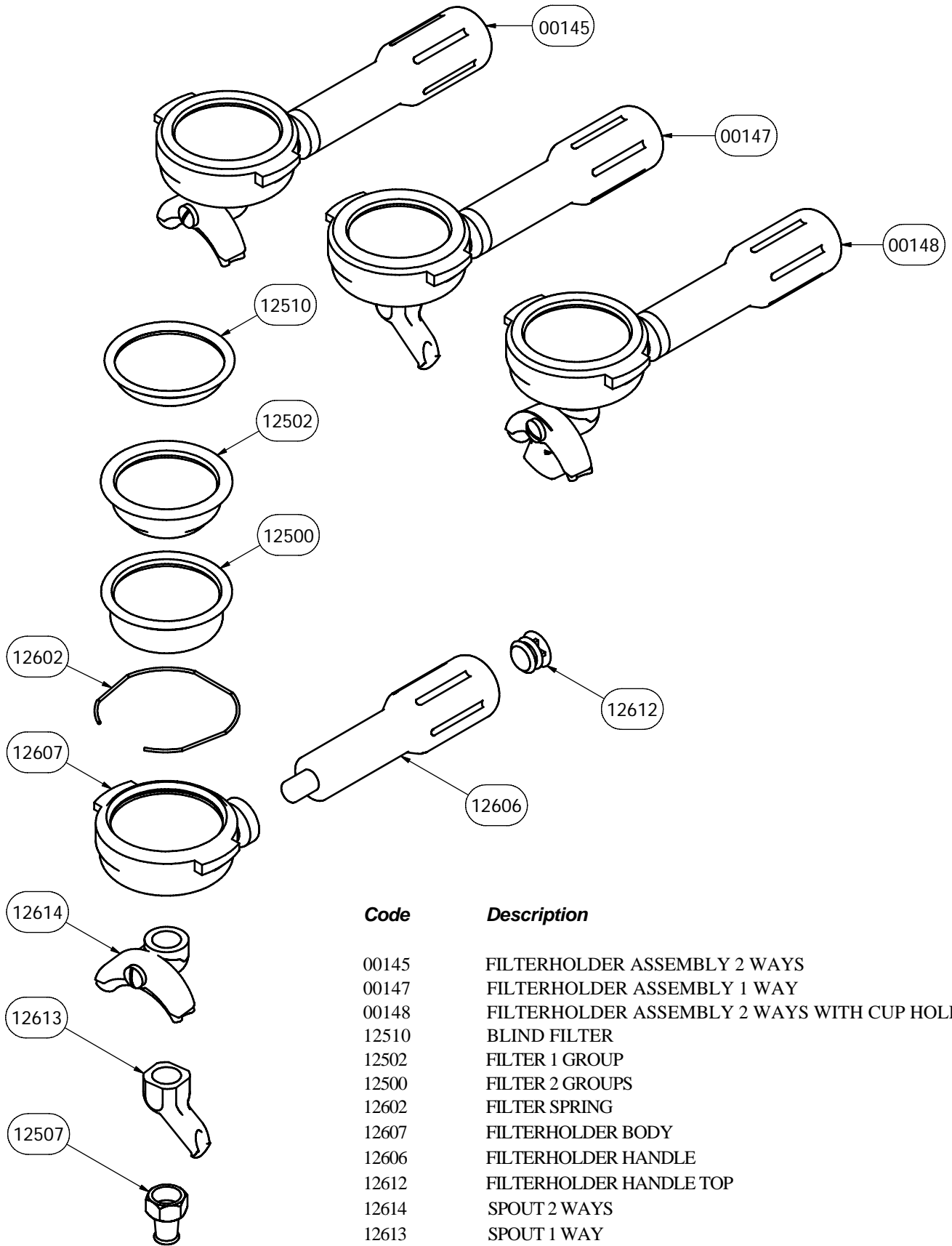




FILTER-HOLDER ASSEMBLY

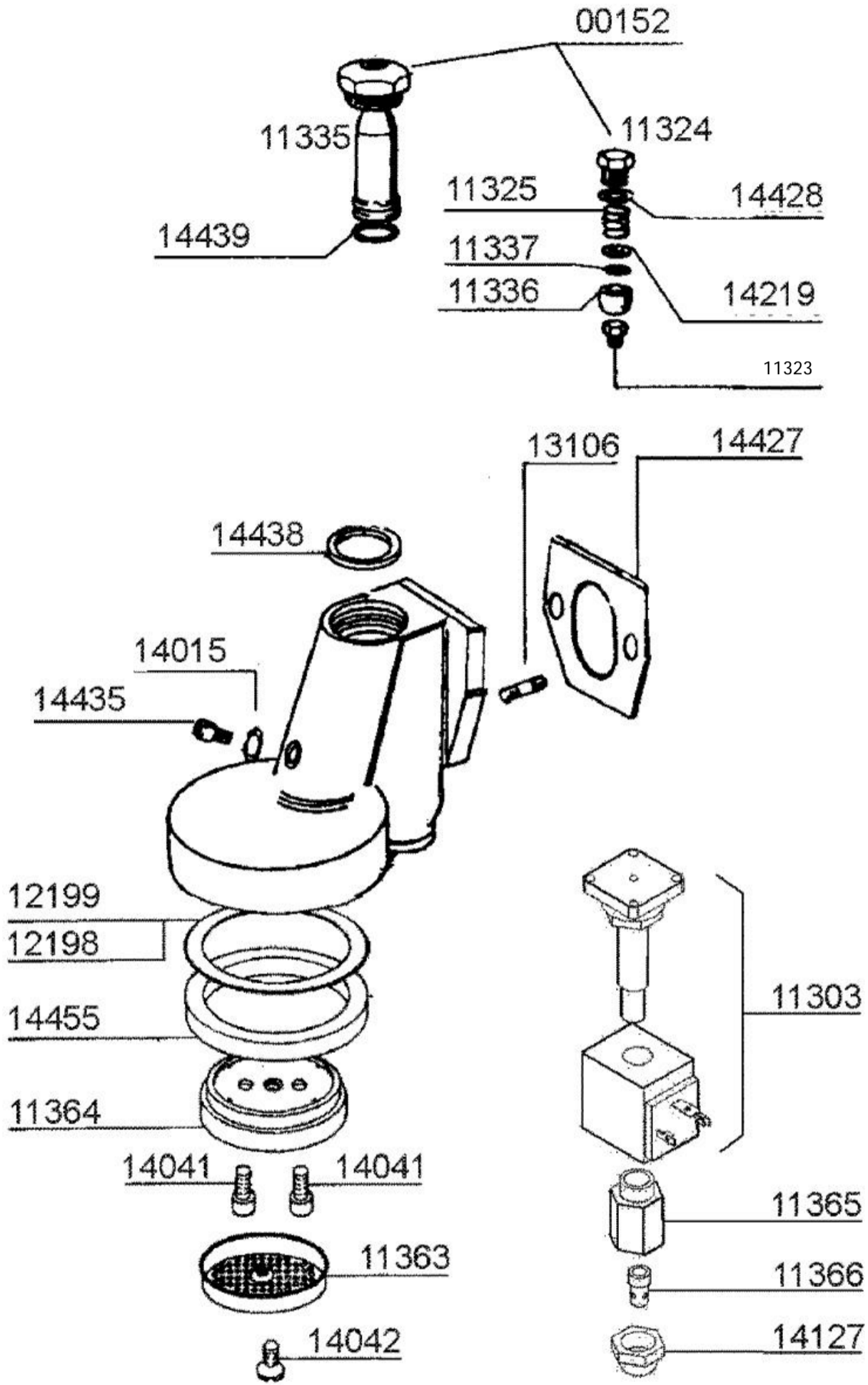
**EXPLODED VIEW**



<b>Code</b>	<b>Description</b>
00145	FILTERHOLDER ASSEMBLY 2 WAYS
00147	FILTERHOLDER ASSEMBLY 1 WAY
00148	FILTERHOLDER ASSEMBLY 2 WAYS WITH CUP HOLDER
12510	BLIND FILTER
12502	FILTER 1 GROUP
12500	FILTER 2 GROUPS
12602	FILTER SPRING
12607	FILTERHOLDER BODY
12606	FILTERHOLDER HANDLE
12612	FILTERHOLDER HANDLE TOP
12614	SPOUT 2 WAYS
12613	SPOUT 1 WAY
12507	VERTICAL SPOUT 1 WAY





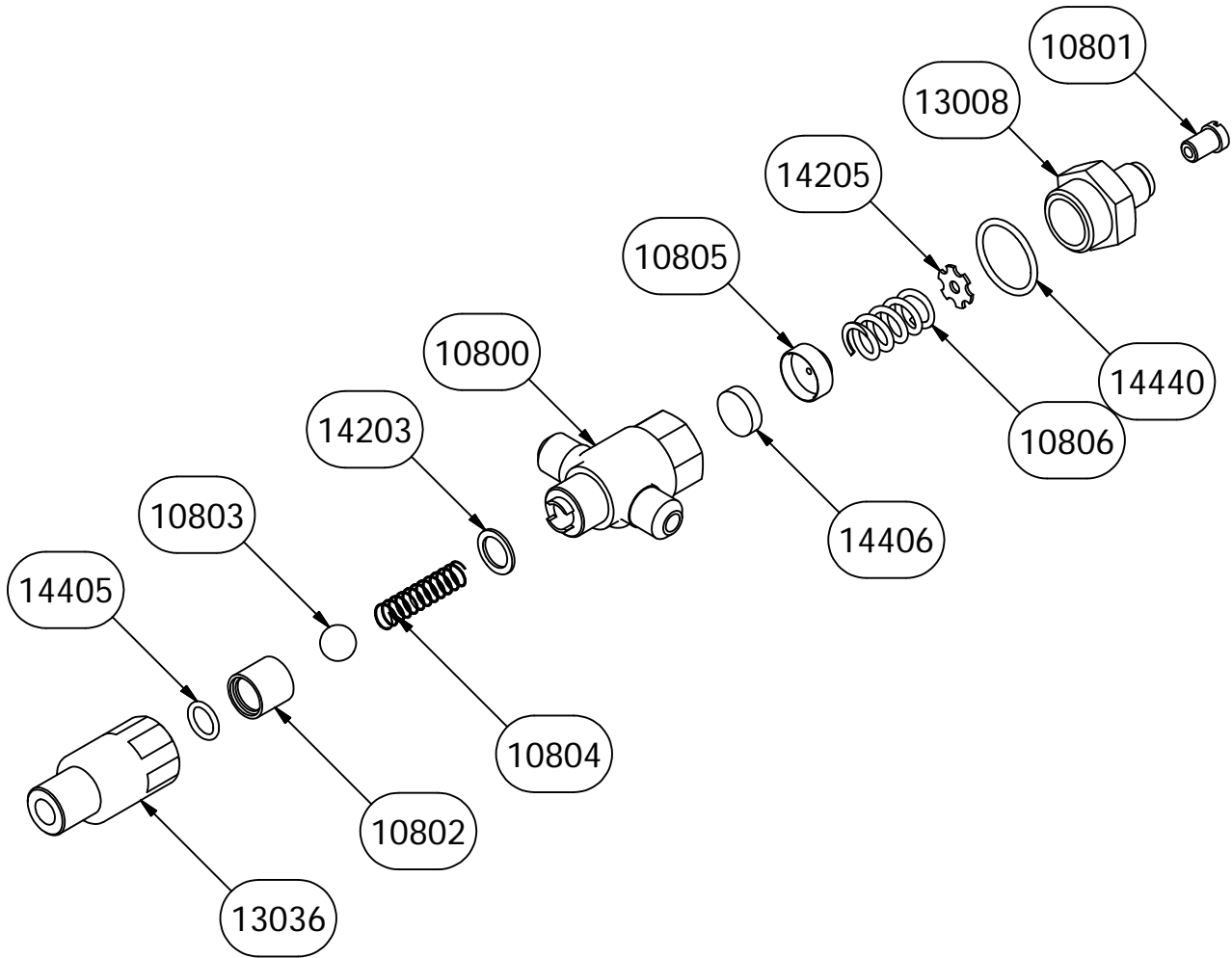


**Code Description**

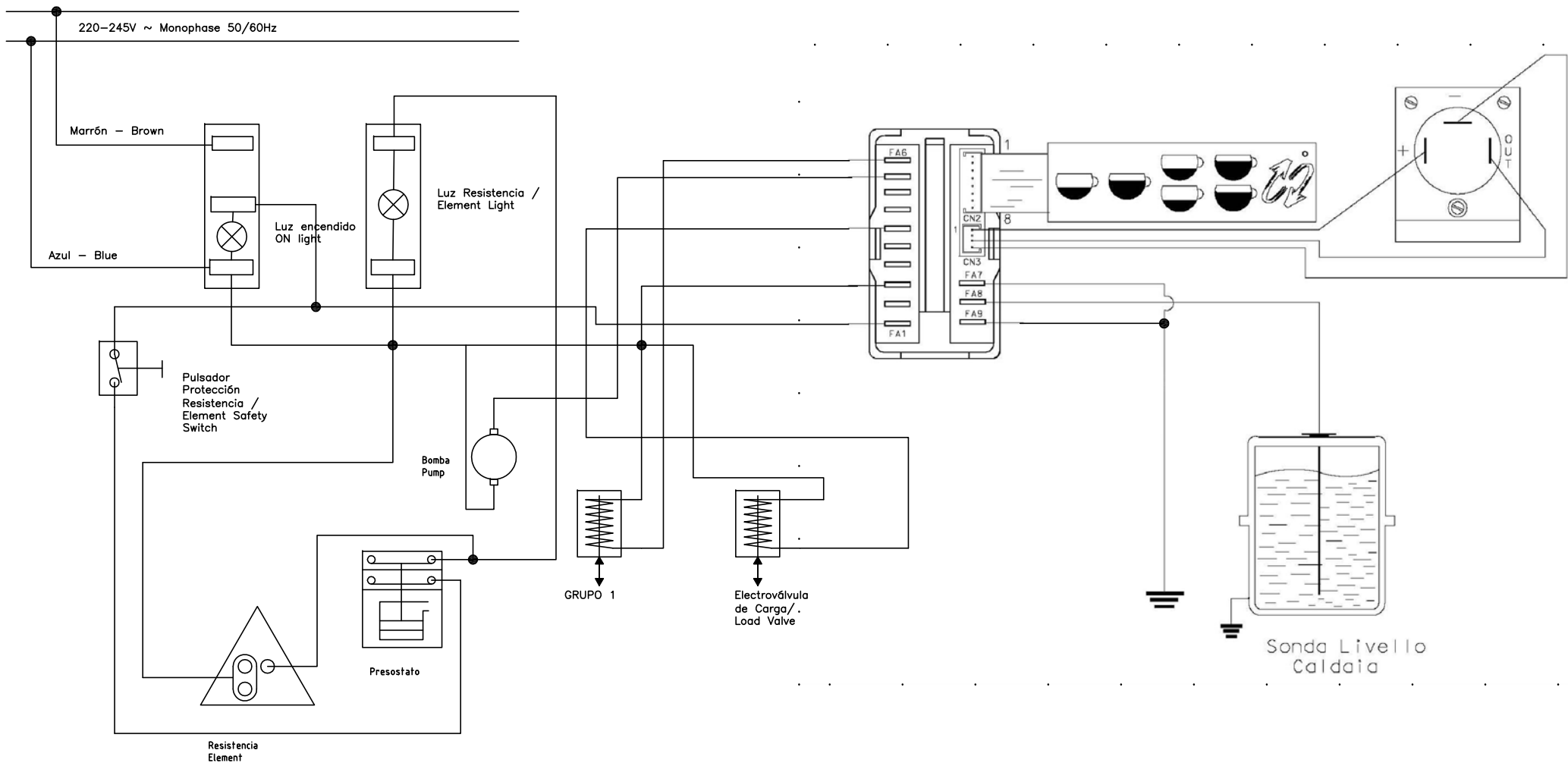
00152	DIFFUSION VALVE ASSEMBLY	13106	GROUP THREAD	11303	SOLENOID
11335	DIFFUSION VALVE SUPERIOR ASSEMBLY	14438	METALPLASTIC GASKET	11365	DISCHARGE FITTING
14428	METALPLASTIC GASKET	14015	ALLEN SCREW GASKET	11366	DIFUIOR DESCARGA
14439	TORIC VITON GASKET	14435	ALLEN SCREW	14127	CHROMED NUT
11324	VALVE FITTING TOP	12198	ADDITIONNAL RING INOX 1,0 MM	11321	GROUP BODY
11325	VALVE SPRING	12199	ADDITIONNAL RING INOX 0,5 MM		
14219	FLAT WASHER	14455	FILTERHOLDER GASKET		
11337	VALVE FILTER	11364	SHOWER HOLDER DIFFUSOR		
11336	FILTER HOST	14041	DIFFUSOR FITTING SCREW		
11323	CHICLEUR	11363	SHOWER INOX		
14427	INSULATING GASKET	14042	SHOWER FITTING SCREW		

EXPANSION-RETENTION VALVE ASSEMBLY

**EXPLODED VIEW**

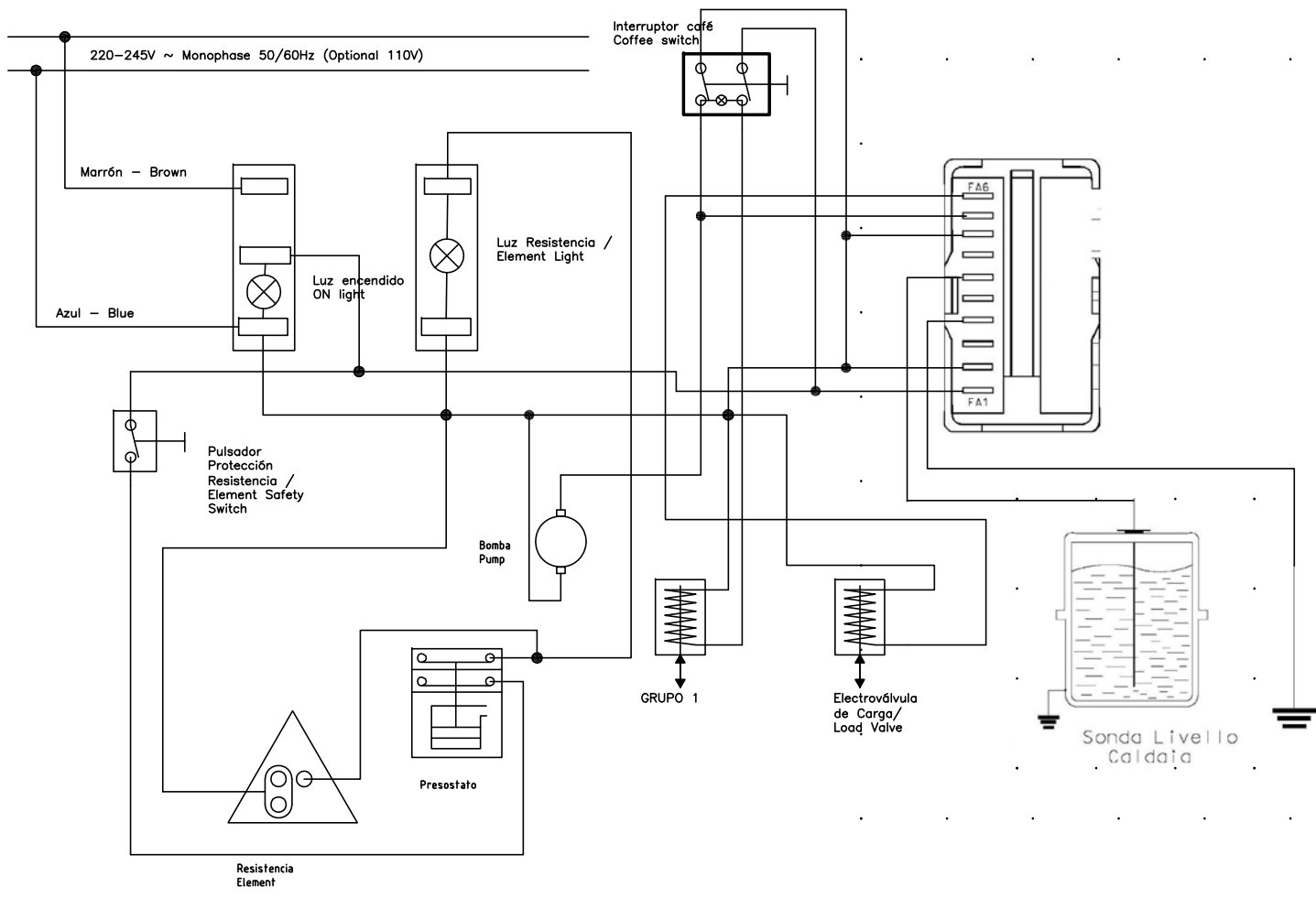


Code	Description
ER 120	EXPANSION-RETENTION VALVE ASSEMBLY
ER 10800	EXPANSION VALVE BODY
ER 10801	VALVE ADJUSTER
ER 10802	FITTING/CLOSING CASE
ER 10803	SPHERE 7/16" D-11 INOX
ER 10804	RETENTION VALVE SPRING
ER 10805	GASKET HOLDER
ER 10806	EXPANSION VALVE SPRING
ER 13036	EXPANSION VALVE FITTING/RACCORD
ER 13008	VALVE REDUCTION FITTING/RACCORD
ER 14203	FLAT WASHER D - 10'5 x 14'8 x 1 COPPER
ER 14205	FLAT WASHER D - 4 x15 x 1 INOX
ER 14405	TORIC GASKET 9,25 x 1,78 NITRILE
ER 14406	EXPANSION VALVE GASKET 15 x 4
ER 14440	METALPLASTIC GASKET 1/2



Electrical diagram - UNO with Net Connection Automatic machines

SIZE	FSCM NO.	DWG NO.	REV
SCALE			SHEET



Electrical diagram - UNO with Net Connection  
Semiautomatic machines

	SIZE	FSCM NO.	DWG NO.	REV
	SCALE	SHEET		